

6003A-90A

High Current Adaptor

Instruction Sheet

Introduction

The 6003A-90A High Current Adaptor (the Product) provides high-current terminals for the 6003A Three Phase Power Calibrator (the Calibrator). The Product plugs into the current output terminals and earth ground terminal on the Calibrator front panel. When the Calibrator is set to the High I mode in Power, Energy, or Current outputs, the Product, and high-current leads, provides a maximum of 90 A of current.

These items are included with the Product:

- 1 pair of high-current connection cables (red and black) terminated with a high-current plug and a spade lug.
- 1 output shorting cable

Contact Fluke Calibration

To contact Fluke Calibration, call one of the following telephone numbers:

- Technical Support USA: 1-877-355-3225
- Calibration/Repair USA: 1-877-355-3225
- Canada: 1-800-36-FLUKE (1-800-363-5853)
- Europe: +31-40-2675-200
- Japan: +81-3-6714-3114
- Singapore: +65-6799-5566
- China: +86-400-810-3435
- Brazil: +55-11-3759-7600
- Anywhere in the world: +1-425-446-6110



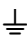
To see product information and download the latest manual supplements, visit Fluke Calibration's website at www.flukecal.com.

To register your product, visit <http://flukecal.com/register-product>.

Symbols

The symbols used in the manuals and on the Product are shown in Table 1.

Table 1. Symbols

Symbol	Description
	Hazardous voltage. Risk of electric shock.
	Risk of Danger. Important information. See Manual.
	Earth Terminal

Safety Information

A **Warning** identifies conditions and procedures that are dangerous to the user.

Warning

To prevent possible electrical shock, fire, or personal injury:

- **Do not apply more than the rated voltage between the terminals or between each terminal and earth ground.**
- **Use only cables with correct voltage and current ratings.**

Connections

⚠️⚠️ Warning

To prevent possible electrical shock, fire, or personal injury:

- Ensure the seven banana plugs on the Product are securely connected with the corresponding seven terminals on the Calibrator.
- Ensure the Calibrator earth ground terminal is fully connected to the corresponding Product terminal.
- Never operate the Product if its housing is not firmly against the Calibrator front panel.

To connect the Product, see Figure 1.

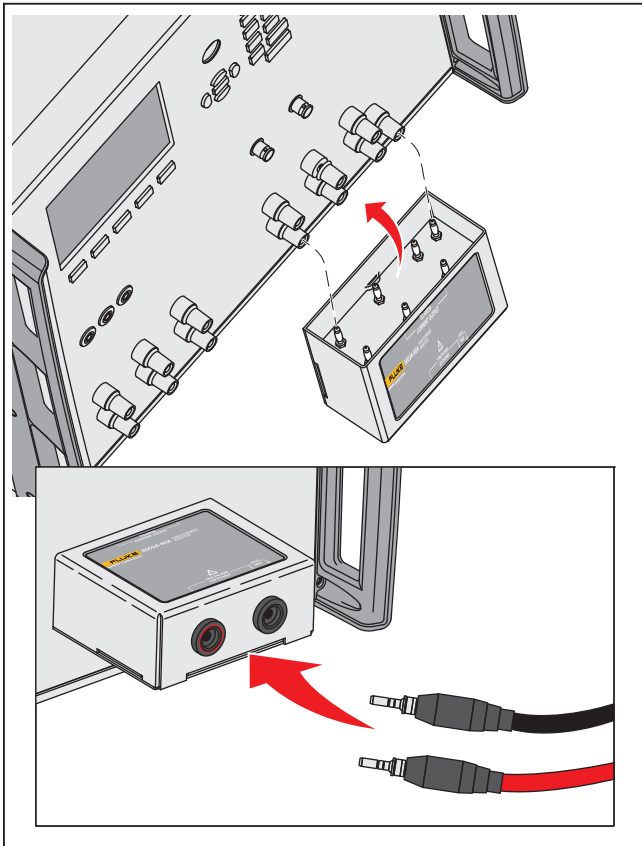


Figure 1. Connections

hoa012.eps

Specifications

Operating Temperature	5 °C to 40 °C
Storage Temperature	-10 °C to 55 °C
Safe operating maximum relative humidity (non-condensing)	<80 %, 5 °C to 31 °C ramping linearly down to 50 % at 35 °C
Operating altitude	2000 m maximum
Non-operating altitude	12,000 m maximum
Maximum Current	90 A rms
Current Output Isolation (high or low terminal)	450 V peak maximum above earth ground. The current output terminals must only be energized by the 6003A Voltage output terminals.

LIMITED WARRANTY AND LIMITATION OF LIABILITY

This Fluke product will be free from defects in material and workmanship for one year from the date of purchase. This warranty does not cover fuses, disposable batteries, or damage from accident, neglect, misuse, alteration, contamination, or abnormal conditions of operation or handling. Resellers are not authorized to extend any other warranty on Fluke's behalf. To obtain service during the warranty period, contact your nearest Fluke authorized service center to obtain return authorization information, then send the product to that Service Center with a description of the problem.

THIS WARRANTY IS YOUR ONLY REMEDY. NO OTHER WARRANTIES, SUCH AS FITNESS FOR A PARTICULAR PURPOSE, ARE EXPRESSED OR IMPLIED. FLUKE IS NOT LIABLE FOR ANY SPECIAL, INDIRECT, INCIDENTAL OR CONSEQUENTIAL DAMAGES OR LOSSES, ARISING FROM ANY CAUSE OR THEORY. Since some states or countries do not allow the exclusion or limitation of an implied warranty or of incidental or consequential damages, this limitation of liability may not apply to you.

Fluke Corporation
P.O. Box 9090
Everett, WA 98206-9090
U.S.A.
11/99

Fluke Europe B.V.
P.O. Box 1186
5602 BD Eindhoven
The Netherlands